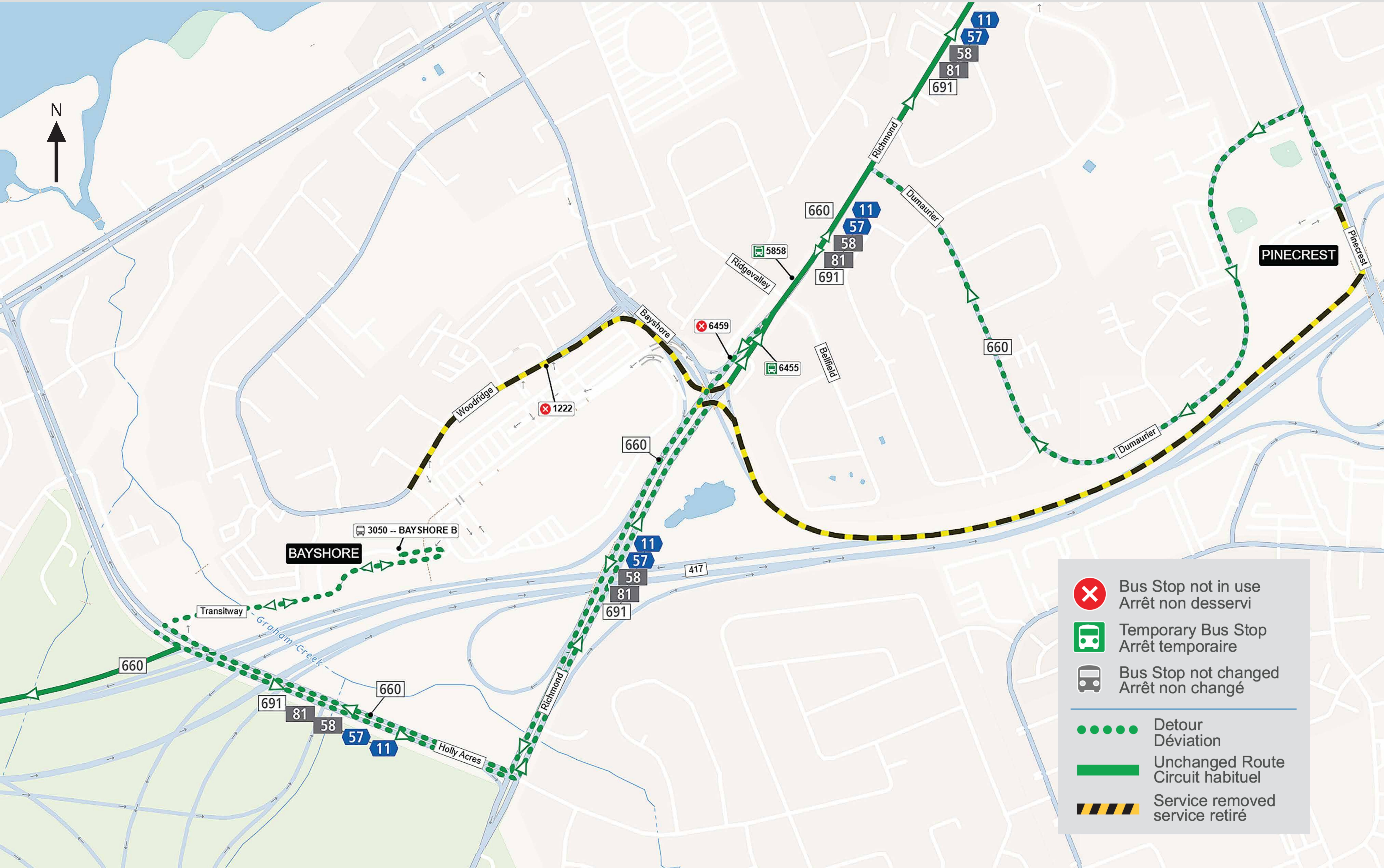
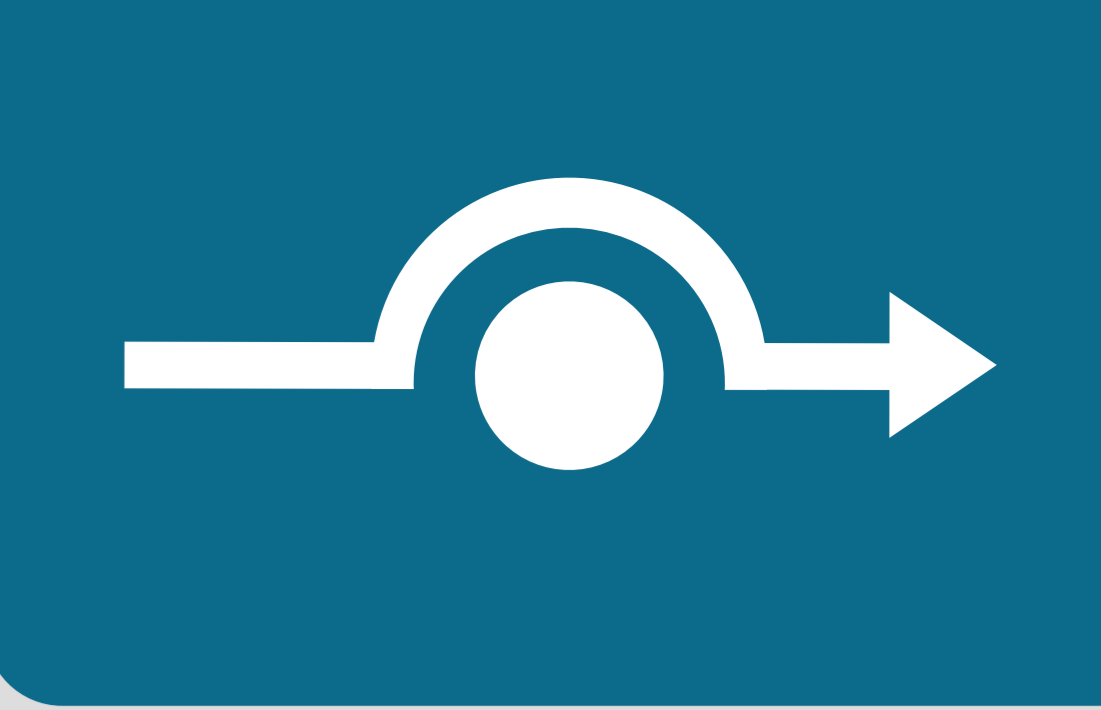


Bayshore bridge project / projet du pont Bayshore

Routes / Circuits: 11, 57, 58, 81, 660, 691



	Bus Stop not in use Arrêt non desservi
	Temporary Bus Stop Arrêt temporaire
	Bus Stop not changed Arrêt non changé
<hr/>	
	Detour Déviation
	Unchanged Route Circuit habituel
	Service removed service retiré